



SOFTWARE SOLUTIONS

PRO Series LineTest

The LINETEST software has been specifically written for use in the production environment to easily set up and run standard velocity tests. Included are the abilities to set the Park position, Pickup position, Test position, number of Precycles (and speed), test for Precharge, and to define up to three different Test speeds at various cyclic amplitudes. Upper and Lower limits can be assigned to Precharge, multiple points along the test waveform, as well as independently of each test peak speed. Data can be collected during each run for diagnostics, and the results are displayed on a user reconfigurable screen, with failures marked according to the limit that was exceeded.

Data can be appended to existing batches, as well as collected in new batch files, for analysis. Statistical results are included at the end of each batch file, including the total number of parts run and total number of part failures. Results can also be displayed in histogram for graphical representation of testing results, and a batch converter is included to provide output in common file formats. Operating limits can either be predefined in a test file or automatically calculated from the statistical mean of a preset number of parts in a new batch run.

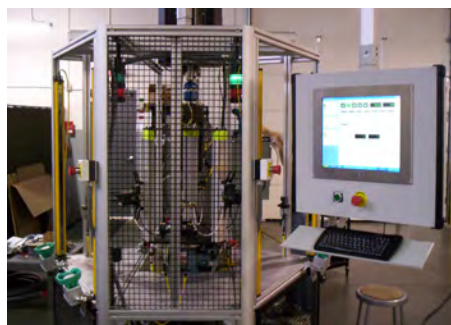
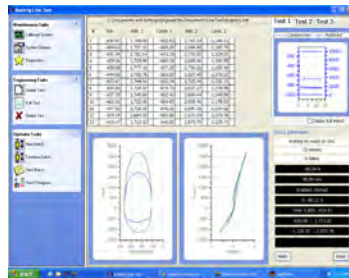
EMA-LT Series

ElectroMagnetic Actuator - Line Test

SYD-LT Series

Scotch Yoke Dyno - Line Test

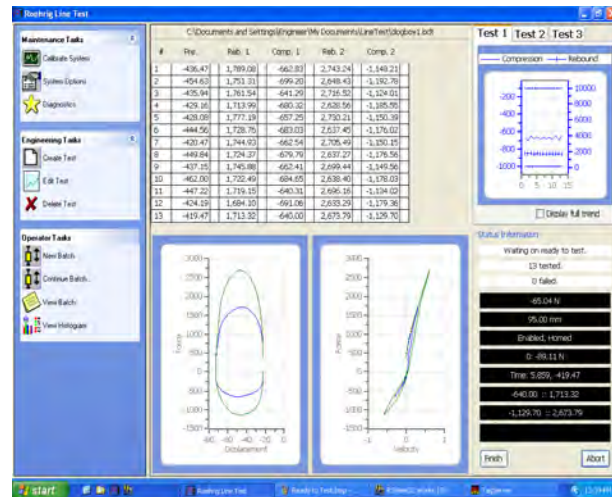
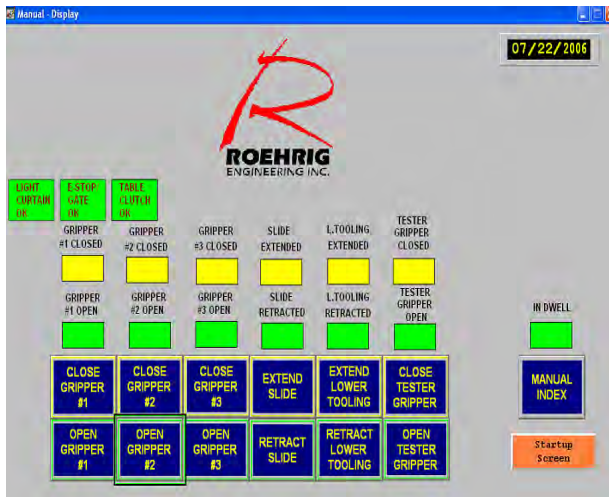
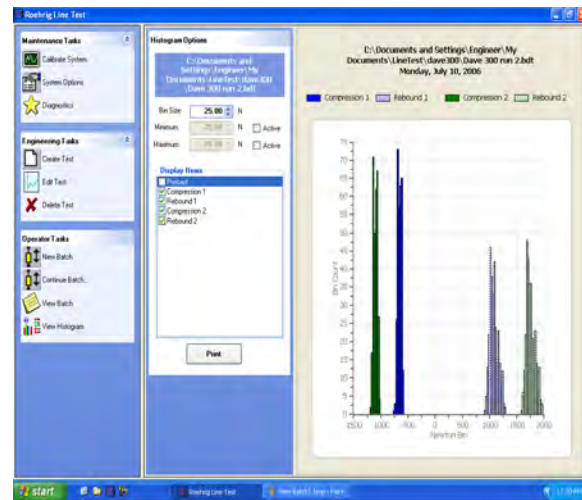
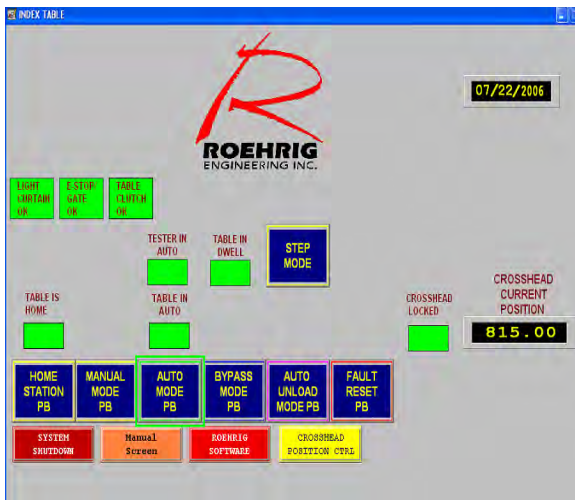
The LT Series software has been specifically written for use in the production environment to easily set up and run standard characterization tests. It can be used on our line of ElectroMagnetic Actuators which allow for variable wave forms or with our Scotch Yoke Dynamometers when fixed amplitude testing is permissible.



PRO Series LineTest EMA and SYD Technology for Production

The PRO Series incorporates Roehrig Testing technology for use in the production environment. Standard configurations include a three station indexing carousel for part loading and unloading, as well as a compact load frame with integral shock body frame holder and pancake actuator. Depending on test parameters, 5-6 second cycle times are achievable.

- NOSE ANGLE
- MULTI-SPEED
- BATCH TESTING
- GAS PRECHARGE
- PASS / FAIL ANALYSIS
- AUTOMATIC LIMIT CALCULATIONS
- STATISTICAL REPORTS and TREND PLOTTING
- STANDALONE or INTEGRATED into AUTOMATED SYSTEMS



Roehrig Engineering, Inc.
 100 Lexington Parkway * Lexington, NC 27295
 Phone: 336-956-3800 ~ 800-735-7265
 Email Sales: Sales@RoehrigEngineering.com
 Email Tech Support: Support@RoehrigEngineering.com

Visit our website www.RoehrigEngineering.com for more information concerning:
 SOFTWARE TIPS - FORUMS - NEWS - DOWNLOADS - TECHNICAL INFORMATION - PRODUCTS - FAQ's

