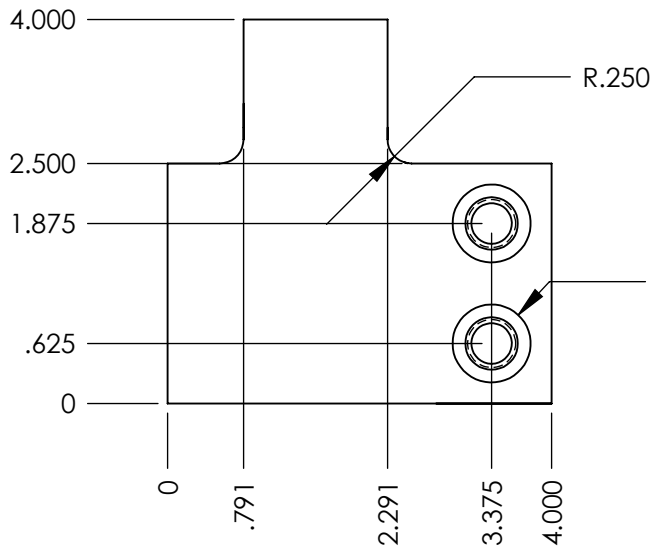
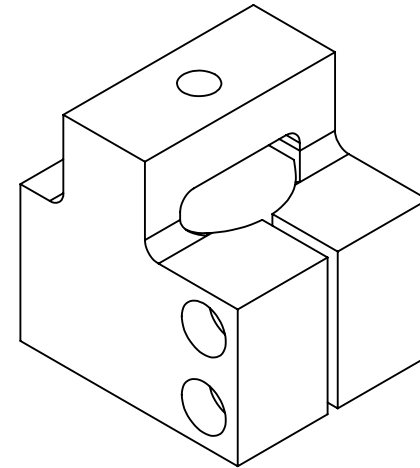
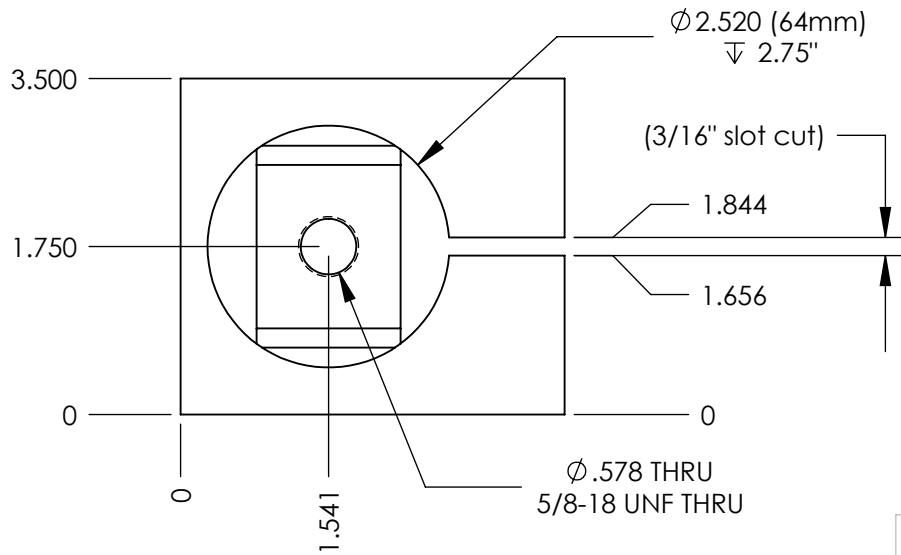
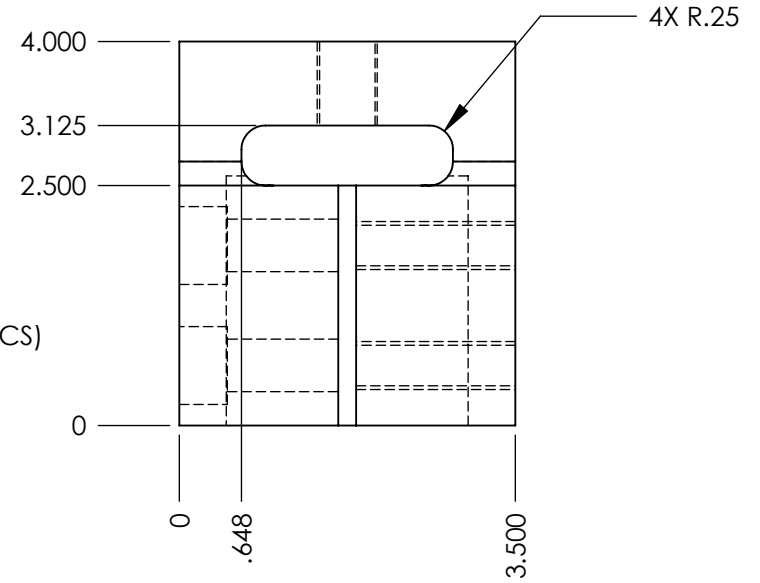


THE INFORMATION CONTAINED IN THIS DRAWING IS THE SOLE PROPERTY OF ROEHRIG ENGINEERING, INC. ANY REPRODUCTION IN PART OR WHOLE WITHOUT THE WRITTEN PERMISSION OF ROEHRIG ENGINEERING, INC. IS PROHIBITED.



2X \varnothing .547 THRU
 \square \varnothing .813 ∇ .50
 (counter bore for 1/2" SHCS)



NEXT ASSY	USED ON
APPLICATION	

UNLESS OTHERWISE SPECIFIED
 DIMENSIONS ARE IN INCHES
 TOLERANCES ARE:
 DECIMALS .X +/- .050
 .XX +/- .010
 .XXX +/- .003
 ANGLES +/- 1/4 DEG

MATERIAL 6061 t6 al
 FINISH tumbled
 DO NOT SCALE DRAWING

CAD GENERATED DRAWING, DO NOT MANUALLY UPDATE	
APPROVALS	date
DRAWN set	10/15/10
CHECKED	
RESP ENG	
MFG ENG	
QUAL ENG	

ROEHRIG ENGINEERING, INC.		
motocross fork upper clamp - 64mm		
SIZE A	DWG. NO. R-5ABCDE-0061-002	REV. 1
SCALE	CAD FILE:	SHEET 1 OF 1

