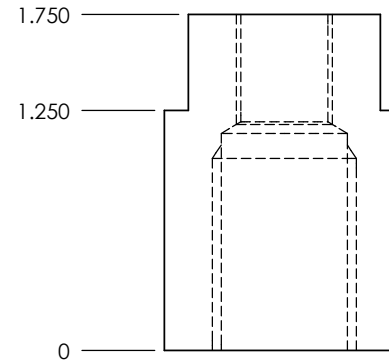
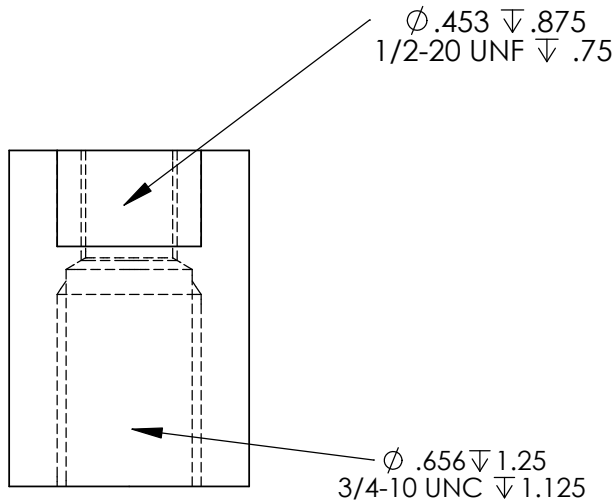
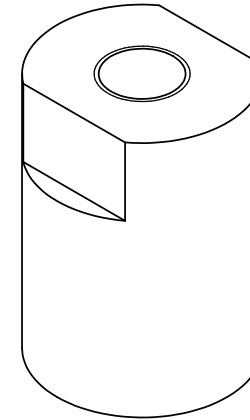
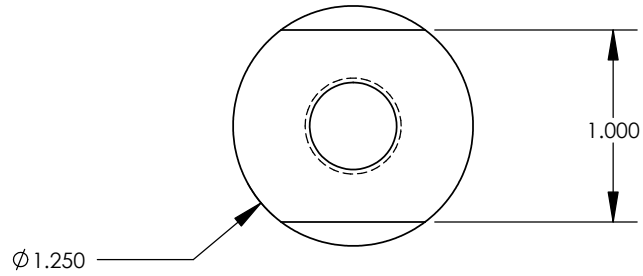


THE INFORMATION CONTAINED IN THIS DRAWING IS THE SOLE PROPERTY OF ROEHRIG ENGINEERING, INC. ANY REPRODUCTION IN PART OR WHOLE WITHOUT THE WRITTEN PERMISSION OF ROEHRIG ENGINEERING, INC. IS PROHIBITED.



NEXT ASSY	USED ON
APPLICATION	

ITEM NO.	PART OR IDENTIFYING NO.	NOMENCLATURE OR DESCRIPTION	MATERIAL SPECIFICATION	QTY REQD
PARTS LIST				
UNLESS OTHERWISE SPECIFIED DIMENSIONS ARE IN INCHES		CAD GENERATED DRAWING, DO NOT MANUALLY UPDATE		ROEHRIG ENGINEERING, INC. Stud end shock clevis adapter
TOLERANCES ARE:		APPROVALS	DATE	
DECIMALS	ANGLES	DRAWN	MAF 5-2-07	
.X +/- .050	+/- 1/4 DEG	CHECKED		
.XX +/- .010		RESP ENG		
.XXX +/- .003		MFG ENG		
MATERIAL		FINISH		SIZE
1018 or 1020 steel		NI Plated		A
DO NOT SCALE DRAWING		QUAL ENG		DWG. NO.
				R-5ABCDE-0026-001
				REV.
				1
		SCALE	CAD FILE:	SHEET 1 OF 1

- Note**
1. Tapped holes to be concentric to each other and concentric to outside profile
 2. Break all edges before plating

