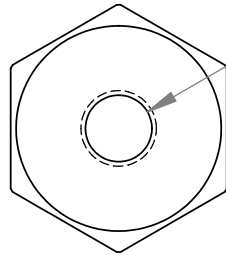
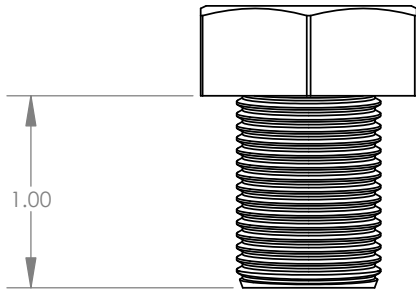
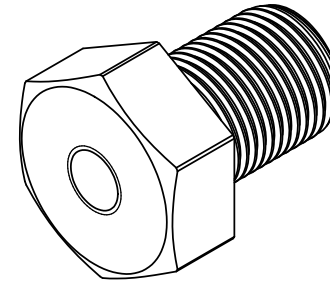


THE INFORMATION CONTAINED IN THIS DRAWING IS THE SOLE PROPERTY OF ROEHRIG ENGINEERING, INC. ANY REPRODUCTION IN PART OR WHOLE WITHOUT THE WRITTEN PERMISSION OF ROEHRIG ENGINEERING, INC. IS PROHIBITED.



$\phi .346 \sqrt{.935}$
M10x1.25 - 6H $\sqrt{.787}$



Note

1. Machine from 3/4-10 UNC x 1.0" long hex head bolt
2. Female threaded hole to be concentric to exterior threads



NEXT ASSY	USED ON
APPLICATION	

ITEM NO.	PART OR IDENTIFYING NO.	NOMENCLATURE OR DESCRIPTION	MATERIAL SPECIFICATION	QTY REQD
PARTS LIST				
UNLESS OTHERWISE SPECIFIED DIMENSIONS ARE IN INCHES TOLERANCES ARE:		CAD GENERATED DRAWING, DO NOT MANUALLY UPDATE	ROEHRIG ENGINEERING, INC.	
DECIMALS		APPROVALS	DATE	
ANGLES		DRAWN	MAF 5-2-07	
.X +/- .050		CHECKED		
.XX +/- .010		RESP ENG		
.XXX +/- .003		MFG ENG		
MATERIAL		QUAL ENG		
FINISH		Stud end shock clevis adapter - M10-1.25 Bolt Adapter -		
DO NOT SCALE DRAWING				
SIZE A	DWG. NO.	R-5ABCDE-0028-001		REV. 1
SCALE	CAD FILE:			SHEET 1 OF 1

