

How to Export Your Settings and Calibrations

You should export your settings every 6 months. Export the files to a folder on your dyno computer and make a copy of the folder and put it somewhere other than your computer for safe keeping, in case your computer crashes. Name the folder with the date and maybe the dyno number for easy remembering. These files will contain your calibrations, preferences, tests and motor settings. If your computer crashes or you get a new computer, having a copy of these will greatly help in the transfer process. To export these files follow the examples.

First, start the Roehrig Shock program. Go to the toolbar at the top and select “Settings”. The first thing to choose is “User settings” and then “Export”. The program will prompt you where to save them, choose your desktop or a folder where you can find the exported files. Your user settings are all the F12 settings (preferences) and the tests you have created in one file.

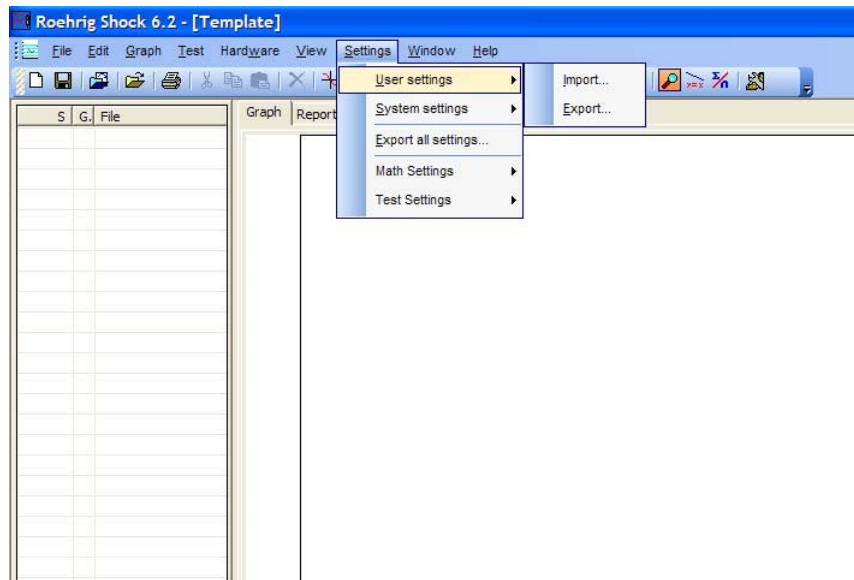


Figure #1: User Settings

Second, you will want to save you “System settings”. This export file will contain your motor and your hardware settings. The motor will include your inverter type and communication port. The “Hardware” will contain your data card type as well as the calibrations for the machine’s sensors. You can choose to do the motor and Datacard individually or as one file, “All”.

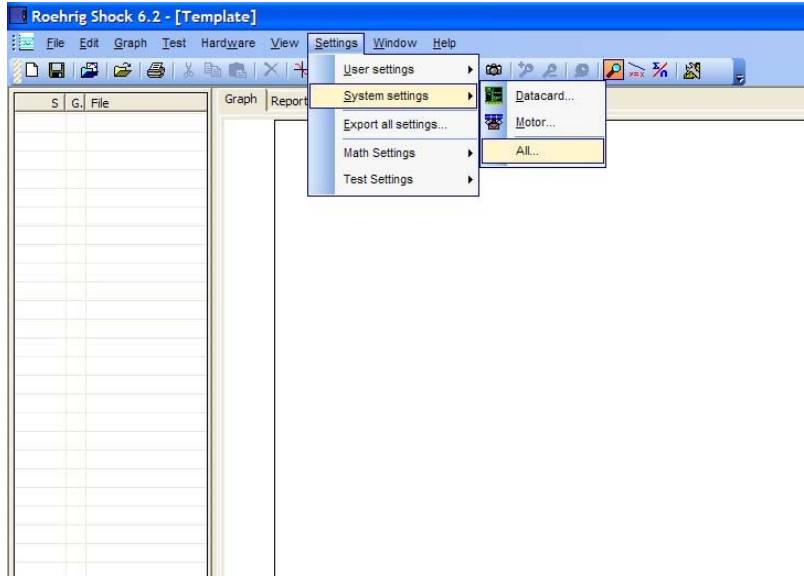


Figure #2: System settings

Third, choose “Test Settings” this is not necessary, but it can come in handy when trying to share the tests you have created with other Roehrig dyno users.

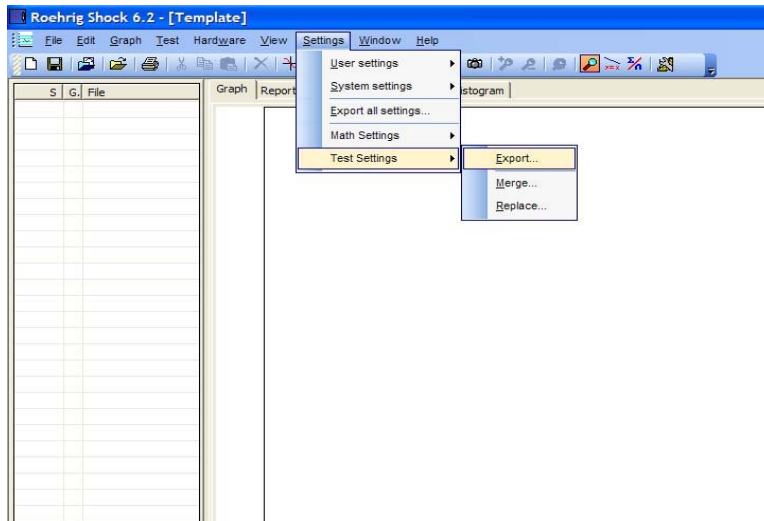


Figure #3: Test Settings